

EPOFLOR 200WB

Water based Resin Floor and Wall

GENERAL DESCRIPTION

AXEL EPOFLOR 200WB is a double component fourth generation pre-dispersed aqueous epoxy polymer resin system specially formulated as a hydrophilic and breathable floor or wall coating system which is resistant to dampness.

AXEL EPOFLOR 200WB cures to a hard and slip surface with a semi-gloss finish surface.

AXEL EPOFLOR 200WB has excellent bond to concrete, metal, timber or glass substrates with a fast cure characteristics for fast and efficient installation.

RECOMMENDED USES

AXEL EPOFLOR 200WB provides a dust proof and an easy to clean environment with good resistant to common oil and chemical attack. It is used widely as a protective or decorative coating to concrete floors or walls as in warehouses, light industrial factories, food processing factories, show rooms, pedestrian walks ways , stone yards etc.

CHARACTERISTICS & ADVANTAGES

- * Good resistant to splash and spillages of a wide range of corrosive chemicals and solvent
- * Durable: good resistance to abrasion
- * Water based: safe in use and low odor
- * Attractive: available in a range of colours
- * Economical: easy to apply and minimizes cleaning costs
- * Provide dust free, clean and hygienic environment

COVERAGE

Theoretical coverage:

4.5m²/kg per coat (depending on surface conditions)

COLOURS

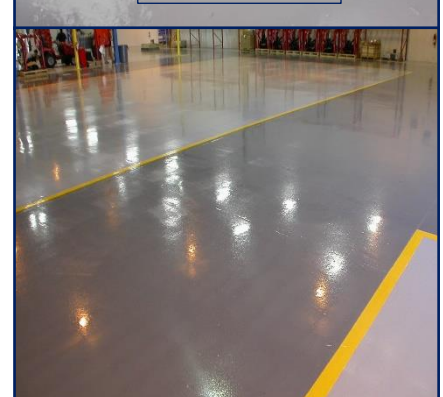
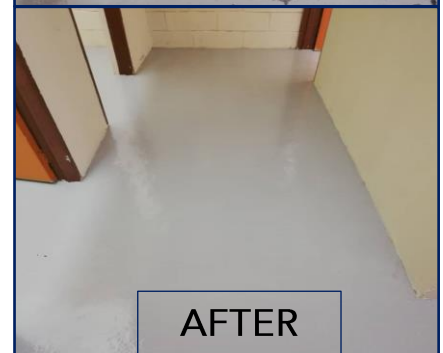
Available in wide range of standard, premium and exclusive colours, please refer Axelchem catalogue

PACKING

25 kg per set (Part A: 18.75 kg per bag Part B: 6.25 kg per bottle)

STORAGE

Store in a dry, cool and shaded place



EPOFLOR 200WB

Water based Resin Floor and Wall

SURFACE PREPARATIONS

Ensure that the existing concrete floor and plaster wall is sound, clean and free from dust, oil, grease and contaminations. Any loose particles, laitance, membrane must be removed. All crack lines must be patched and repair with **AXEL MORTAR 303MC** to level.

METHOD OF APPLICATION

* Can applied by brush, roller, or squeegee.

* Floor Application:

Apply **AXEL EPOFLOR 200 PRIMER** coat and allow drying. Topping with **AXEL EPOFLOR 200 WB** neat coat with roller at least 2 coats. Apply second layer after the first layer has cured tack free.

* Wall Application:

Apply **AXEL EPOFLOR 200 PRIMER** coat and allow to dry. Topping with **AXEL EPOFLOR 200WB** neat coat with roller at least 2 coats. Apply second layer after the first layer has cured tack free.

* Allow at least 24 hours curing before open for foot traffic.

* Once mix that shows sign of stiffening, **AXEL EPOFLOR 200WB** mixture should be discarded. Mixing according to required usage to prevent material wastage.

Notes: Application Temperature or ambient substrate: Please consult to our Technical Advisor if the temperature is <20 °C.

TECHNICAL SPECIFICATIONS

No of components	Two
Mixing ratio	3:1 (A:B)
Finishing	Semi gloss
Pot life (28°C)	Approximately 30 minutes after mixing
Recommended thickness	100 microns per coat
Drying time (28°C)	Tack free : 2-4 hours depending on temperature and humidity Fully cure : 7 days
Physical Performance	
Shore D hardness	55
Pencil hardness	HB
Impact resistant	50 cm
Compression strength (7 days)	> 20 Mpa
Chemical Resistant	
Water resistant	Excellent
10% NaCl	Excellent
10% H ₂ SO ₄	Acceptable
10% NaOH	Good

EPOFLOR 200 WB

Water based Resin Floor and Wall

CLEANING OF TOOLS

Clean all tools and application equipment with water immediately after use. Hardened or cured material can only be mechanically removed.

SHELF LIFE

12 months from the date of production if stored properly in original, unopened and undamaged sealed packaging in dry conditions.

The above data is provided in good faith and to the best of our knowledge. However, since application and services conditions are beyond our control, we do not accept liability relating to coverage, performance and injury arising from the use of our products based on the data. Further with the constant advancement of technology we reserve the right to modify data without prior notice and we advise that you check with our Axelchem Technical Department at Tel: 603-6276 2118 the validity of these data especially if more than six months have lapsed since issue.