

## FILL 140

Expansion Joint Filler Board

### GENERAL DESCRIPTION

AXEL FILL 140 is a closed cell, crossed linked, non-absorbent polyethylene expansion joint filler board for use in expansion and isolation joints in concrete and masonry structures.

### RECOMMENDED USES

- \* Slab on ground
- \* Reinforced concrete structures
- \* Water retaining and excluding structures
- \* Concrete roads & pavements
- \* Suspended slabs
- \* Brickwork and block work
- \* Basements and tunnels

### CHARACTERISTICS & ADVANTAGES

- \* Non- absorbent
- \* No bitumen content
- \* Lightweight
- \* Ability to compress and recover
- \* Excellent weather ability
- \* No- extruding from joint movement

### COVERAGE

2 m<sup>2</sup> / pcs

### COLOURS

Black

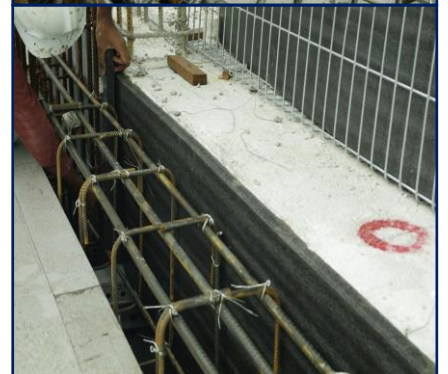
### PACKING

2m (L) X 1 m (W) /sheet

Thickness range: 10, 15, 20, 25 mm or customized size

### STORAGE

Store in a dry, cool and shaded place



### SURFACE PREPARATIONS

Ensure all joint surfaces is free from dirt, oil and grime. Any loose particles or laitance must be removed prior to starting the filler board installation.

### METHOD OF APPLICATION

- \* AXEL FILL 140 is cut to size in sheet form with a sharp retractable blade.
- \* Sheets and rolls are adhered to the first concrete structure by a contact adhesive.
- \* Adhesive is applied directly to the sheet in 50mm diameter "spots" at 300 mm center (approximately) or as required.

### CLEANING OF TOOLS

Clean all tools and application equipment with water immediately after use. Hardened or cured material can only be mechanically removed.

### TECHNICAL SPECIFICATIONS

No. of components	One
Material	Polyethylene (PE)
Compression stress strain	0.35 kg/cm <sup>2</sup>
Elongation at break	100%
Water absorption (24 hours)	≤ 0.02 g/cm <sup>3</sup>
Tensile strength	> 2.5 kg/cm <sup>2</sup>

### SHELF LIFE

12 months from the date of production if stored properly in original, unopened and undamaged sealed packaging in dry conditions.

The above data is provided in good faith and to the best of our knowledge. However, since application and services conditions are beyond our control, we do not accept liability relating to coverage, performance and injury arising from the use of our products based on the data. Further with the constant advancement of technology we reserve the right to modify data without prior notice and we advise that you check with our Axelchem Technical Department at Tel: 603-6276 2118 the validity of these data especially if more than six months have lapsed since issue.