

## MOULD OIL 904DX

High Grade Oil Based  
Formwork Release Agent

### GENERAL DESCRIPTION

**AXEL MOULD OIL 904DX** is a higher-grade blend of mineral oils and chemicals specially designed to promote a de-mould interface between both steel and timber formwork during concreting.

The specially formulated grade **AXEL MOULD OIL 904DX** will improve demoulding of the formwork from the concrete, and significantly reduce "pin holes" on the concrete surface.

### RECOMMENDED USES

Use as a chemical formwork release agent to concrete interface such as:

- \* Metal formwork
- \* Timber formwork
- \* Plastic formwork

### CHARACTERISTICS & ADVANTAGES

- \* Promote water repellency
- \* Easy to use
- \* Non-staining
- \* Can be used on all types of formwork
- \* Reduce corrosion on steel formworks

### COVERAGE

Approximately 20 m<sup>2</sup>/litre depending on substrate condition

### COLOURS

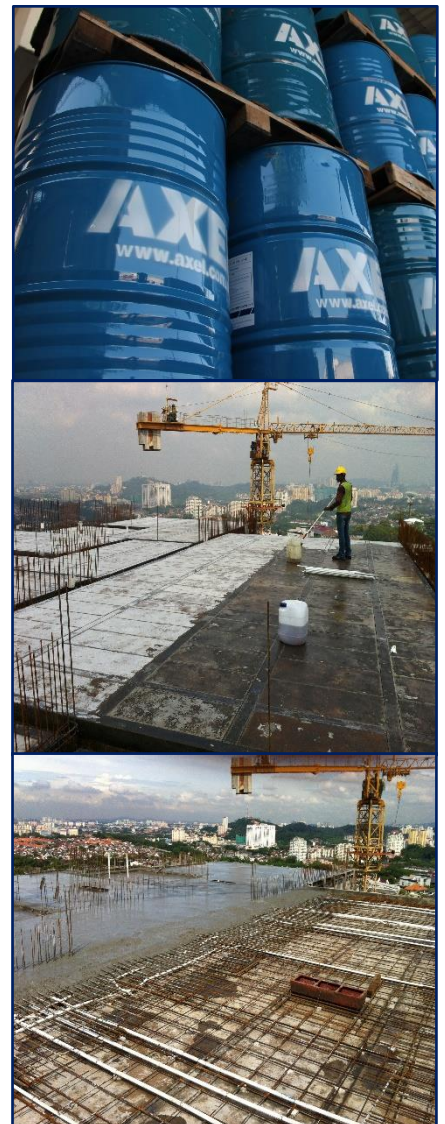
Yellowish brown (Amber)

### PACKING

20 litre per pail, 200 litre per drum

### STORAGE

Store in a dry, cool and shaded place.



# MOULD OIL 904DX

High Grade Oil Based  
Formwork Release Agent

## SURFACE PREPARATIONS

Ensure that all surfaces to be coated must be clean and free from dust, dirt, grease and contaminations.

## METHOD OF APPLICATION

Preferably by low pressure sprayer which will permit the quoted rates of spread to be obtained. Brush applicator may also be used but the material should be well brushed out to obtain the most economical and effective results. Formwork should be treated before being erected, thus avoiding the dust and other contamination of reinforcement. Should reinforcement become coated with **AXEL MOULD OIL 904DX** by accident, it should be painted with a cement slurry to react with the **AXEL MOULD OIL 904DX** and this slurry should be brushed off immediately before the concrete is poured. **AXEL MOULD OIL 904DX** should be applied to the formwork prior to each use, it should be given at least 5 to 10 minutes to penetrate the surface before concrete or the brick. Timber forms can be protected and sealed with **AXEL MOULD OIL 904DX** enabling re-use many times without deterioration. Ensure **AXEL FORMGUM 921** is fully cured before applying **AXEL MOULD OIL 904DX**.

## CLEANING OF TOOLS

Clean all tools and application equipment with detergent solution immediately after use. Hardened or cured material can only be mechanically removed.

## TECHNICAL SPECIFICATIONS

No. of components	One
Specific gravity	0.84 - 0.86 kg/l
Dilution	Not required
Flash point (Cleveland open cup)	180°C      ASTM D92
Kinematics viscosity @ 40°C	18.76 mm <sup>2</sup> /s      ASTM D7042
Recoating	Recoat after exposure to hot weather / heavy rain condition for longer period.

## SHELF LIFE

12 months from the date of production if stored properly in original, unopened and undamaged sealed packaging in dry conditions.

The above data is provided in good faith and to the best of our knowledge. However, since application and services conditions are beyond our control, we do not accept liability relating to coverage, performance and injury arising from the use of our products based on the data. Further with the constant advancement of technology we reserve the right to modify data without prior notice and we advise that you check with our Axelchem Technical Department at Tel: 603-6276 2118 the validity of these data especially if more than six months have lapsed since issue.