

### GENERAL DESCRIPTION

AXEL TOP 207 is a graded blend of inorganic cement component with silica fume aggregates formulated as a dry shake monolithic application hardener for concrete.

### RECOMMENDED USES

As an industrial hardwearing and medium abrasion resistant floor to areas such as:

- \* Warehouses and distribution centers
- \* Workshops, garage and service stations
- \* Pavements and walkways
- \* Quays and jetties
- \* Sport stadiums

### CHARACTERISTICS & ADVANTAGES

- \* Medium wear resistance rating
- \* Increases impact resistance
- \* Improves resistance to oil and grease
- \* Reduces dust and easy to clean
- \* Easy to lay
- \* Cost effective surface hardener

### COVERAGE

Consumption will depend on application method and the concrete mix(w/c-ratio). Theoretical coverage:

- \* General floor application: 3 kg/m<sup>2</sup>
- \* Medium duty floor : 4 kg/m<sup>2</sup>
- \* Heavy duty floor : 7kg/ m<sup>2</sup>
- \* Super heavy duty floor : 9kg/m<sup>2</sup>

### COLOURS

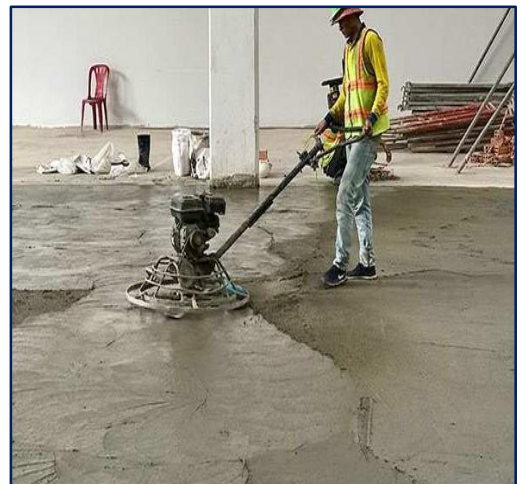
Standard Grey

### PACKING

25 kg per bag

### STORAGE

Store in a dry, cool and shaded place



### SURFACE PREPARATIONS

Before application of **AXEL TOP 207**, ensure that the concrete is well compacted and leveled. Concrete to be applied should achieve a compressive strength of >20 Mpa after 28 days. Only start using **AXEL TOP 207** when the concrete starts setting where foot traffic is possible. Do not wait too long as it will make application difficult. Do not use in areas where constant humidity water is expected.

### METHOD OF APPLICATION

**Mechanical Application – Automatic spreader in conjunction with a laser screed – Spread AXEL TOP 207** evenly onto the concrete immediately after screeding at 3-7kg/m<sup>2</sup> in one application

- \* Smoothen concrete surface with power floating machine
- \* Scatter **AXEL TOP 207** over surface at approximately 4 to 7 kg/m<sup>2</sup> with 4 kg at medium duty and 7kg at heavy duty.
- \* Continue smoothing the surface until desired finish is obtained.
- \* Apply **AXEL CONCRETE SEAL 905** or **CONCRETE CURE 920** curing compound immediately after floating, either by brush, roller or spray.
- \* Where necessary, form "grooves" by diamond cutting to form expansion joints filled with sealant after 24 hours.

Note: This product is not suitable for concrete containing more than 3% entrained air.

### CLEANING OF TOOLS

Clean all tools and application equipment with water immediately after use. Hardened or cured material can only be mechanically removed.

### TECHNICAL SPECIFICATIONS

No. of component	One
Solid content	100 %
Compressive strength	50-55 Mpa (28 days)
Mohs Hardness Scale	7
Impact strength	25% weight loss
Chemical resistance	Medium
Abrasion resistance (Bohme-1000 cycles)	9.0 g/cm <sup>3</sup>
Application temperature	5°C - 30°C
Flammability	Non flammable
Drying time (28°C)	Foot traffic : 24-48 hours Fully cure : 28 days

### SHELF LIFE

12 months from the date of production if stored properly in original, unopened and undamaged sealed packaging in dry conditions.

The above data is provided in good faith and to the best of our knowledge. However, since application and services conditions are beyond our control, we do not accept liability relating to coverage, performance and injury arising from the use of our products based on the data. Further with the constant advancement of technology we reserve the right to modify data without prior notice and we advise that you check with our Axelchem Technical Department at Tel: 603-6276 2118 the validity of these data especially if more than six months have lapsed since issue.