

GENERAL DESCRIPTION

AXEL JOINT SEAL 108 is an elastomeric thermoplastic polyolefin (TPE) with fabric edging flexible membrane design and manufactured for waterproofing of basements, flat roof, ponds, lagoons, tanking etc.

AXEL JOINT SEAL 108 has been widely used all over the world with more than 20 years of experience worldwide in waterproofing protection.

RECOMMENDED USES

- * RC flat roofs
- * Lagoons
- * Planter boxes or balconies
- * Basement walls or floors

CHARACTERISTICS & ADVANTAGES

- * Very tough durable puncture resistant membrane
- * Easy to lay
- * Consistent thickness & quality
- * U.V. stable
- * Flexible
- * Anti- root waterproofing
- * Resistant to alkalis and acids

COVERAGE

Theoretical coverage: N.A.

COLOURS

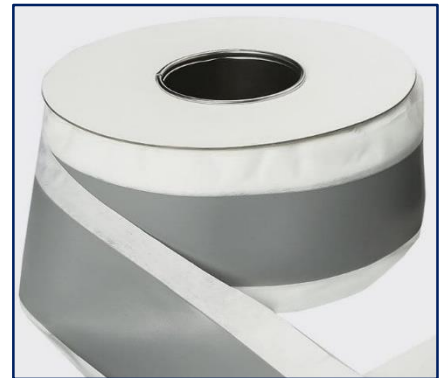
Grey

PACKING

30 m x 32.5 cm per roll

STORAGE

Store in a dry, cool and shaded place



SURFACE PREPARATIONS

All surfaces must be clean free of grime, dust or other foreign materials. Loose particle, laitance, old membrane must be removed prior to **AXEL JOINT SEAL 108** installation.

METHOD OF APPLICATION

- * Unroll folded roll of **AXEL JOINT SEAL 108**
- * Mix the 2 components adhesive together and apply 1-2mm thick uniform layer onto the substrate with spatula. (Not mixing well will cause poor adhesion)
- * Lay on the **AXEL JOINT SEAL 108** by pressing lightly along the non- woven sides. Make sure to remove all the air bubbles.
- * Apply a layer of adhesive again while the first layer is still fresh. Completely covering the fabric strip and smooth off with a flat trowel.

CLEANING OF TOOLS

Clean all tools and application equipment with water immediately after use. Hardened or cured material can only be mechanically removed.

TECHNICAL SPECIFICATIONS

No of component		One
Size		30 m x 32.5 cm x 1.2mm
Breakage strength (N/mm ²)	EN ISO 527-1	> 4.5
Elongation at break (%)	EN ISO 527-1	> 650
Resistance to temperature		from -20°C to 80°C
Anti-roots	SIA V280/11	No root penetration
Water absorption (N/mm ²)	EN 1928-B	≤ 0.6
Bending at low temperature (°C)	SIA V280/3	< -30
Maximum elongation of expansion zone (mm)		10

SHELF LIFE

12 months from the date of production if stored properly in original, unopened and undamaged sealed packaging in dry conditions.

The above data is provided in good faith and to the best of our knowledge. However, since application and services conditions are beyond our control, we do not accept liability relating to coverage, performance and injury arising from the use of our products based on the data. Further with the constant advancement of technology we reserve the right to modify data without prior notice and we advise that you check with our Axelchem Technical Department at Tel: 603-6276 2118 the validity of these data especially if more than six months have lapsed since issue.